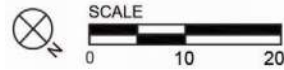


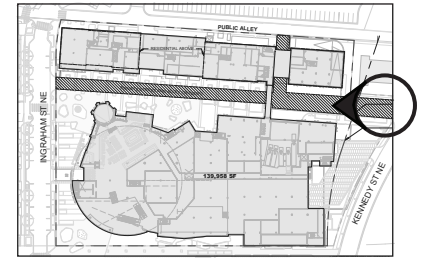
- T.O. ROOF - WEST 217' - 6"
- LEVEL 08 WEST 206' - 8"
- LEVEL 07 WEST 197' - 0"
- LEVEL 06 WEST 187' - 4"
- LEVEL 05 WEST 177' - 8"
- LEVEL 04 WEST 168' - 0"
- LEVEL 03 WEST 158' - 4"
- LEVEL 01 - NORTH RETAIL WEST 143' - 0"
- LEVEL 00 - LOBBY WEST 134' - 0"

FIT-OUT BY TENANT.
SEE DESIGN GUIDELINES

FIT-OUT BY TENANT.
SEE DESIGN GUIDELINES



NORTH AND CENTRAL TOWER - EAST ELEVATION



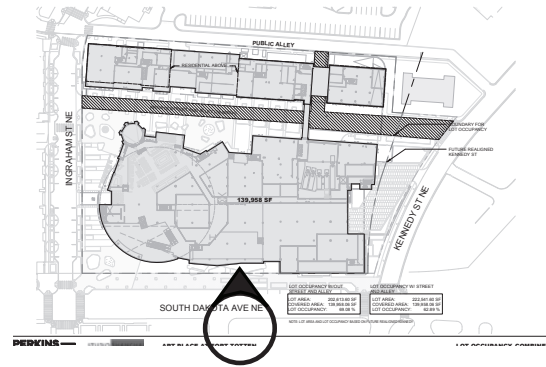
- ROOF 06 EAST
208' - 6"
- LEVEL 05 EAST
197' - 8"
- LEVEL 04 EAST
188' - 0"
- LEVEL 03 EAST
178' - 4"
- LEVEL 02 EAST
168' - 8"
- LEVEL 01 EAST
159' - 0"



- T.O. ROOF - WEST
217' - 6"
- LEVEL 08 WEST
206' - 8"
- LEVEL 07 WEST
197' - 0"
- LEVEL 06 WEST
187' - 4"
- LEVEL 05 WEST
177' - 8"
- LEVEL 04 WEST
168' - 0"
- LEVEL 03 WEST
158' - 4"
- LEVEL 01 - NORTH RETAIL WEST
143' - 0"

EXTERIOR FINISHES | COMMERCIAL

KEY PLAN



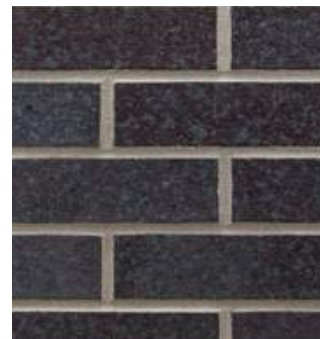
1. METAL FINISH 02



2. FRITTED GLASS



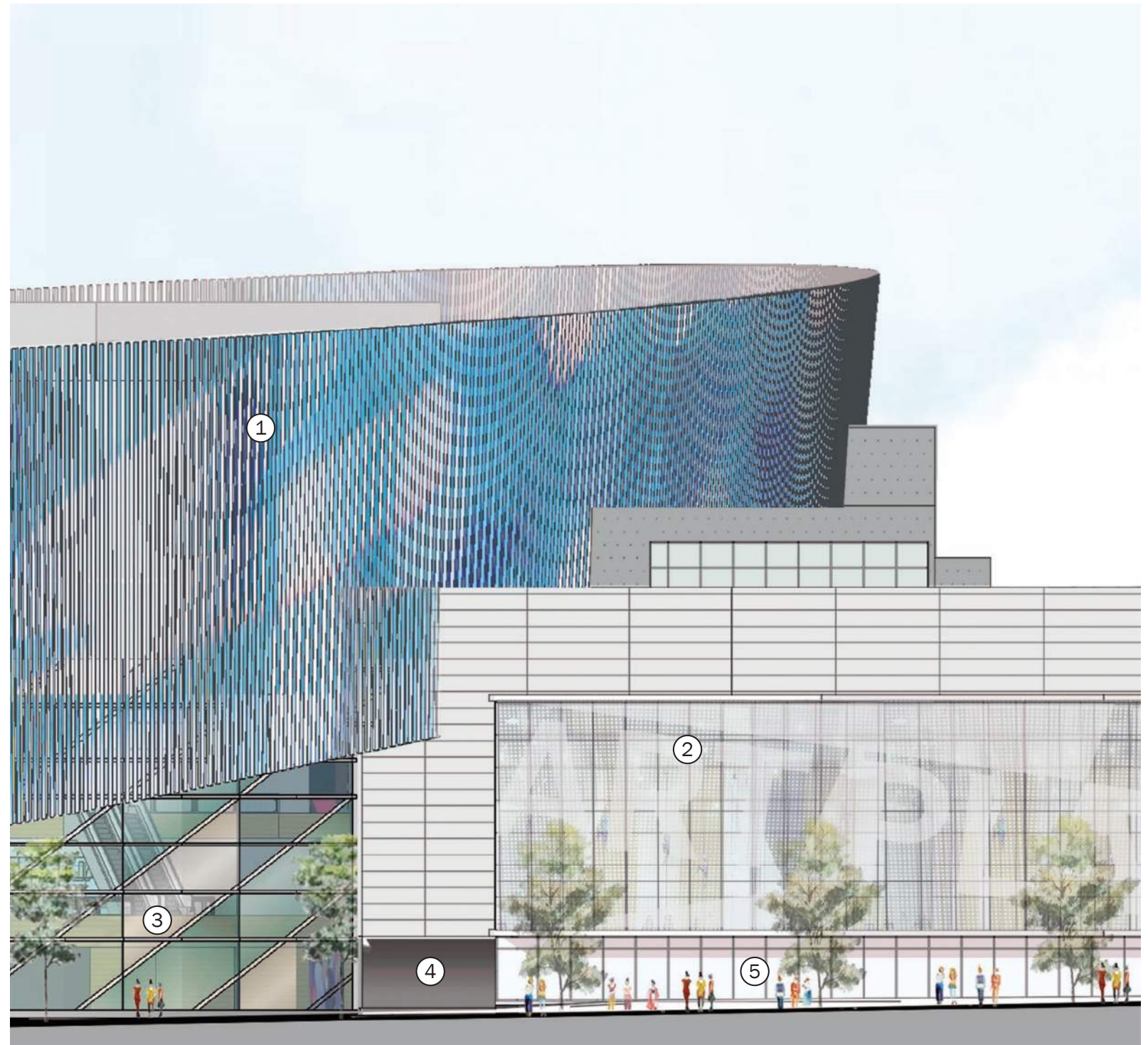
3. CURTAIN WALL



4. BRK-04

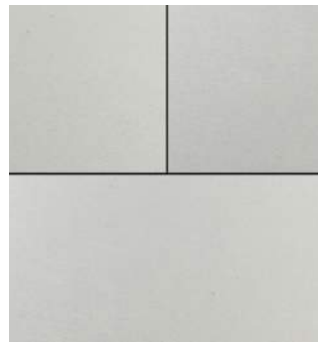
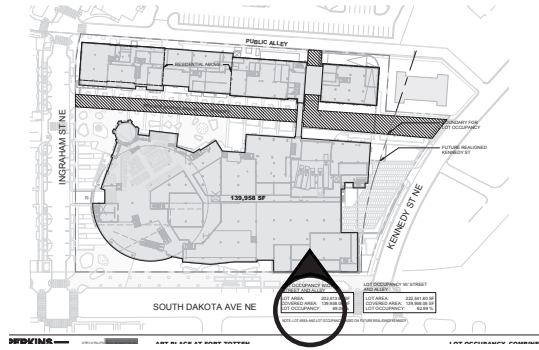


5. STOREFRONT



EXTERIOR FINISHES | COMMERCIAL

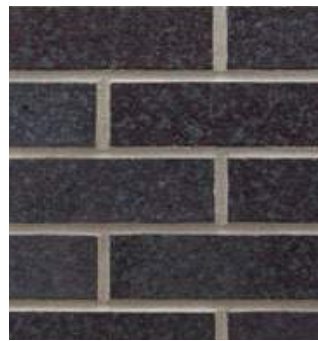
KEY PLAN



1. METAL PANEL 02



2. STUCCO 02 LIGHT GREY



3. BRK-04



4. CURTAIN WALL



5. MASONRY
BASE ELEMENTS



6. WOOD PANEL

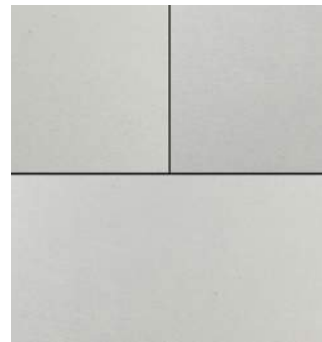
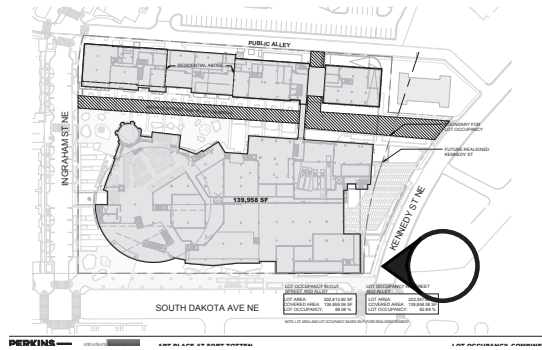


MATERIALS: SOUTH DAKOTA AVE NE & KENNEDY STREET ELEVATION

ART PLACE AT FORT TOTTEN

EXTERIOR FINISHES | COMMERCIAL

KEY PLAN



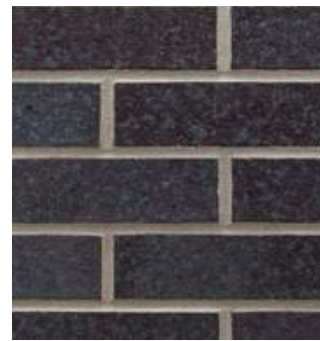
1. METAL PANEL 02



2. STUCCO 02 LIGHT GREY



3. WOOD PANEL



4. BRK-04

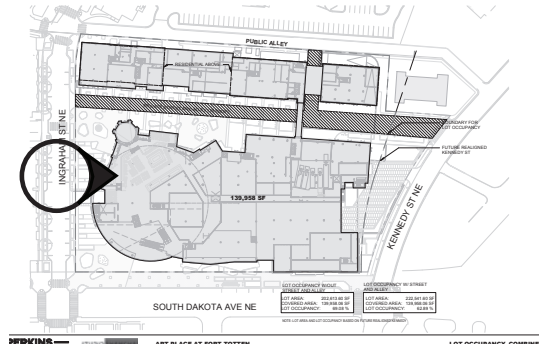


5. MASONRY
BASE ELEMENTS



EXTERIOR FINISHES | COMMERCIAL

KEY PLAN



1. METAL FINISH O2



2. WOOD PANEL



3. STONE O2A



4. STONE O2B



5. BRK-04



6. STOREFRONT

